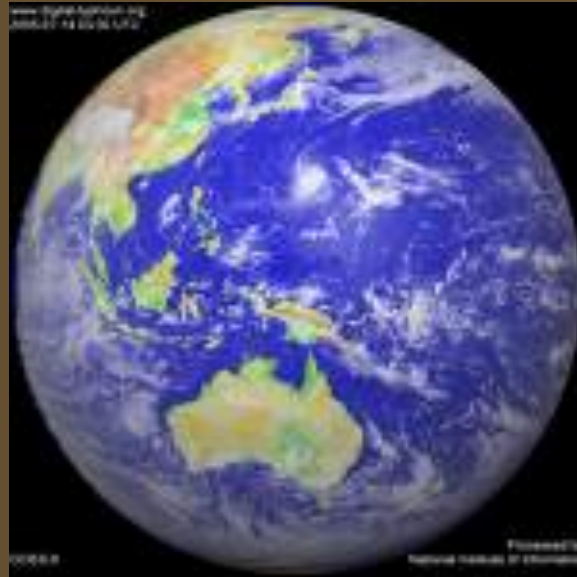


World Culture Model



Looking at different aspects of a society.

Physical Geography

- Significant geographical features
 - What the land looks like



Other Cultures

- Different groups that make up a society



Political

- Relating to or dealing with the structure or affairs of government, politics or the state



Social

- Relating to human society and its modes of organization
 - Social classes, social problems, a social issue, popular activities



Beliefs

- Something believed or accepted as true
 - Religion, common ideas
 - Values—patriotism, emphasis on education



Economics

- Deals with the production, distribution and consumption of goods and services, technology
 - Money, work, retail



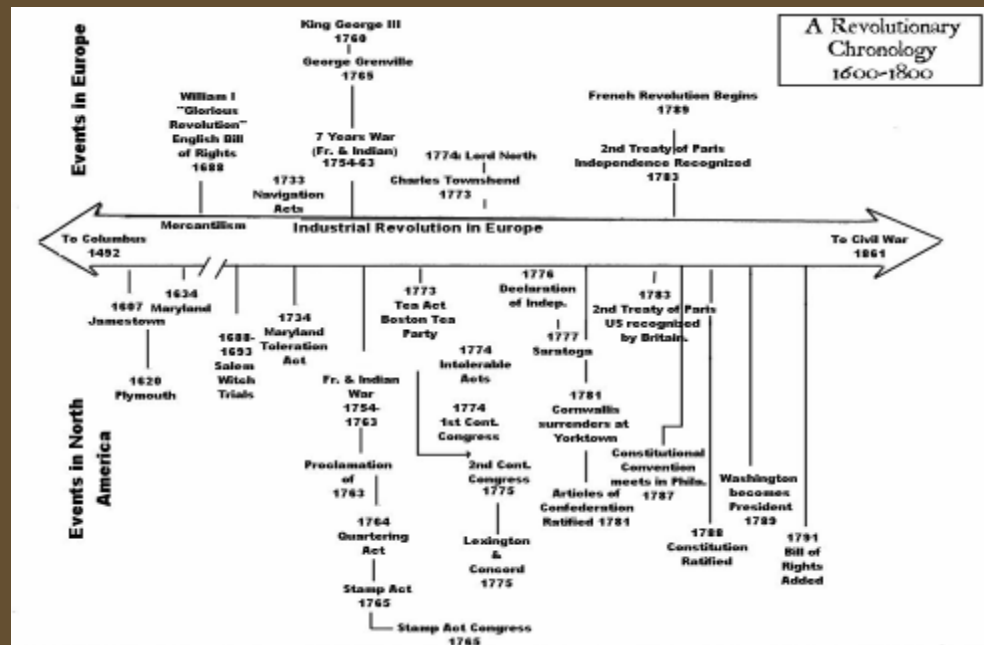
Aesthetics

- The appreciation of beauty, creative endeavors
- Arts, Architecture, Music, Poetry, etc.



History: Timeline

- Important dates in a culture history



OTHER CULTURES: trading, conquering, languages



POLITICAL –
government
laws, authority,
judges/courts

SOCIAL-
friends,
entertainment
family, language,
social structure



BELIEFS-
religion,
values,
morals



PHYSICAL
GEOGRAPHY:

land forms-
mountains,
rivers,
lakes,
natural resources
climate



ECONOMICS-
money!
businesses, food
trade/barter, taxes
distribution of resources



AESTHETICS-
"the arts",
architecture,
paintings, plays,
drama, poetry
literature, dance



HISTORY/TIMELINE: chronological events



What would the World Culture Model for Ponderosa look like?

